

# UPCOMING @ LIDAM



[Welcome](#) · [Thanks](#) · [Theses](#) · [Events](#) · [Visitors](#) · [Media](#) · [Trainings](#) · [Library](#) · [E-News](#) · [Travels](#) · [Social Follow](#)

## WELCOME TO



### [Karim Barigou](#)

Prof. of Actuarial Sciences

*Risk Management - Mortality modelling*

*Pricing and hedging - Insurance data science*

Office : ISBA D.116



### [Stefan Creemers](#)

Prof. of Operations Research

*Scheduling - Project Management - Inventory Management*

*Green Logistics - Quantum Computing - Optimization*

Office : Mons



### [Quentin Lété](#)

Prof. of Operations Research

*Power Systems - Market Design - Optimization*

Office : CORE B.105

**Post-Doc**



■ Joël Baraka Akilimali

Post-Doc

Supervisor : Amma Panin

Office : CORE B.219



■ Francesco Pisanu

Post-Doc

Supervisor : Daniele Catanzaro

Office : CORE B.117



■ [Mathilde Sage](#)

Post-Doc

Supervisor : William Parienté

Office : IRES D.105



■ [Ella Sargsyan](#)

Post-Doc

Supervisor : Jean-François Parienté

Office : IRES D.229



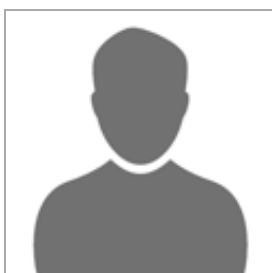
■ Sumit Shrivastav

Post-Doc

Supervisor : Paul Belleflamme

Office : CORE B.117

## PhD

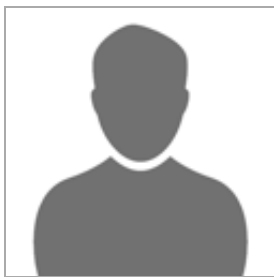


■ Mattis Dartevelle

Teaching Assistant

Supervisor : Sébastien Van Bellegem

Office : CORE B.327



 Cyril Ghislan

Teaching Assistant

Supervisor : Sébastien Van Bellegem

Office : CORE B.333



 Antoine Gilain

Teaching Assistant

Supervisor : Bertrand Cadelon

Office : LFIN B.030



 Thomas Grava

Teaching Assistant

Supervisor : Frédéric Vrins

Office : LFIN B.034



 Sami Kellal

PhD

Supervisor : Bertrand Cadelon

Office : LFIN B.030

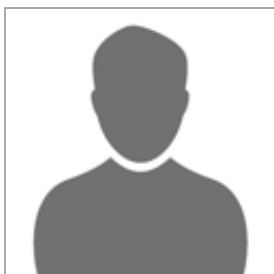


 Jean-Claude Mpawenayo

PhD

Supervisor : Bertrand Cadelon

Office : LFIN B.034



 Daniel Ntabanganyimana

PhD

Supervisor : Amma Panin

Office : CORE B.227



■ Anna Queck

PhD

Supervisor : Jean Hindriks

Office : CORE B.227



■ Sofia Tiraff

Teaching Assistant

Supervisor : Amma Panin

Office : CORE B.219

## SMCS



■ Laura Vermeren

Statistical consultant

Office : SMCS C.315

## THANKS TO



■ Pierre Devolder

Pierre Devolder has been named Professor Emeritus. We extend our deepest thanks for his invaluable contributions and dedication over the years.



■ Johan Segers

Thank you, Johan, for your significant contributions to advancing research at LIDAM (ISBA). We wish you all the best in your future projects.

## THESES

## ■ Hugues Annoye

will defend his thesis entitled

[Statistical matching and data generation](#)

Thesis advisor: Prof. Cédric Heuchenne (ISBA)

September 11, 2024 | 14:00 | Doyen 31

[Add to my calendar](#)



## ■ Tom Duterme

will defend his thesis entitled

[The semiotic Infrastructure of Financial Markets](#)

Thesis advisors: Prof. Jean De Munck (IACS) and Prof. Catherine D'Hondt (LFIN)

September 13, 2024 | 16:00 | LECL 93

[Add to my calendar](#)



## ■ Luis Herrera Bravo

will defend his thesis entitled

[Expectations and policy in DSGE models](#)

Thesis advisors: Prof. Luca Pensieroso (IRES) & Prof. Jesus Vázquez (UPV/EHU)

September 16, 2024 | 13:00 | [TEAMS](#)

[Add to my calendar](#)



## ■ Matteo Barbagli

will defend his thesis entitled

[Advances in credit risk management:](#)

[Extensions of the Basel ASRF framework and LGD empirical insights](#)

Thesis advisor: Prof. Frédéric Vrms (LFIN)

September 24, 2024 | 16:00 | Doyen 21

## EVENTS

### Monitoring and forecasting macroeconomic and financial risk

The 2024 edition of the So.Fi.E. Summer School is chaired by Prof. Leonardo Iania (CORE).



**September 9-13, 2024**

For supplementary information about the program and the invited speakers, click [here](#).



## **Doctoral Course**

***Causal Inference in Microeconometrics with Applications to Program Evaluation***

Teachers : [Bart Cockx](#) (UGent) and [William Parienté](#) (UCLouvain)

**On Fridays, October–December 2024**

## **VISITORS**

**NEW visitors : 02/09/2024 - 13/09/2024**



**■** [Camilla Mastromarco](#)

(University of Calabria)

*Invited by Leopold Simar*

*From 08/09/2024 to 14/09/2024*



**■** [Morgane Rigaux](#)

(ULB)

*Invited by Joseph Gomes*

*From 08/07/2024 to 30/01/2025*



**■** [Anne Vanhems](#)

(Toulouse Business School)

*Invited by Leopold Simar*

*From 09/09/2024 to 13/09/2024*

## Other visitors

■ [Riccardo Paba](#) (Univesita di Sassari)

*Invited by Paul Belleflamme - From 01/09/2024 until 25/02/2025*

■ [Ernesto San Martin](#) (Pontificia Universidad Católica de Chile)

*Invited by Sébastien Van Bellegem - From 15/05/2024 to 15/11/2024*

■ [Andualem Welde](#) (University of Macerata)

*Invited by Sandy Tubeuf - From 06/05/2024 to 15/10/2024*

## LIDAM IN THE MEDIA

■ **Bertrand Cadelon**

- [Après le bon d'état, le "bon communal" : prêter de l'argent à sa commune, un investissement intéressant ?](#)

*L'Avenir - 04/09/2024*

■ **Jean Hindriks**

- [Des mesures cosmétiques qui manquent d'ambition : ce que cache la réforme des provinces](#)

*Le Vif - 01/09/2024*

- [Les enseignants belges sont-ils vraiment mieux payés que leurs voisins européens ? Ce que disent les chiffres](#)

*La Libre - 04/09/2024*

■ **Anh Nguyen**

- [Bons d'État, livrets, Bourse... - Que faire de son argent?](#)

*Moustique - 04/09/2024*

- [Épargner pour ses enfants](#)

*Moustique - 04/09/2024*

*Would you like to have access to an article ?*

*Send your request to [lidam.com@uclouvain.be](mailto:lidam.com@uclouvain.be)*

## STATISTICAL TRAININGS



Registration & Information

## Introduction à l'analyse de réseaux sociaux avec **Gephi**

*[3 demi jours] - [début le 11-09-2024 à 09:30] - [Louvain-la-Neuve]*

## Introduction au calcul de **taille d'échantillon**

*[4 demi jours] - [début le 30-09-2024 à 09:30] - [Louvain-la-Neuve]*

## Junior Data Analyst CERTIFICAT D'UNIVERSITÉ

Des compétences concrètes pour accéder aux nouvelles carrières du traitement de données

## Certificat universitaire en **Junior Data Analyst**

*[24 jours]*

*De octobre 2024 à juin 2025*

*[Français] -*

*[Louvain-la-Neuve]*

## Analyser la médiation, la modération et la médiation modérée avec **SPSS**

*[4 demi jours] - [début le 04-11-2024 à 09:30] - [Louvain-la-Neuve]*

## Gestion et visualisation de données en **Excel**

*[4 demi jours] - [début le 05-11-2024 à 09:30] - [Louvain-la-Neuve]*

**AT THE LIBRARY**

*Each week you can check the latest books available at the LIDAM Library*

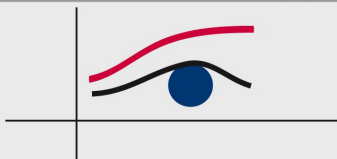


- CHALKIADAKIS G., ELKIND E., WOOLDRIDGE M.  
**Computational aspects of cooperative game theory**

More New Books

## E-NEWS

REGARDS ÉCONOMIQUES



N° 185

[Perspectives économiques 2024-2025](#)

Repertorium  
Eruditorum  
Totius  
Europae

[Scholars and Literati at the Royal Norwegian Society of Sciences and Letters \(1760–1800\)](#)



[Follow Repertorium Eruditorum on Twitter](#)

## THE BING BANG BLOG

[Jean Cocteau, oublié ? Oui, un peu !](#)

Victor Ginsburgh

[Réussir sa fin de vie](#)

Pierre Pestieau



[The history of pre-modern European universities in a nutshell](#)

David de la Croix, e.a.

[From media narratives to racial equality:  
How Superman helped to pave the ground for Civil Rights](#)

Joseph Gomes, e.a.

## LIDAM TRAVELS

### **Always take a part of LIDAM with you!**

Are you travelling somewhere outside Louvain-la-Neuve or abroad?

Send a picture of a LIDAM goodie  
to [lidam.com@uclouvain.be](mailto:lidam.com@uclouvain.be)  
and "let your colleagues travel with you!"

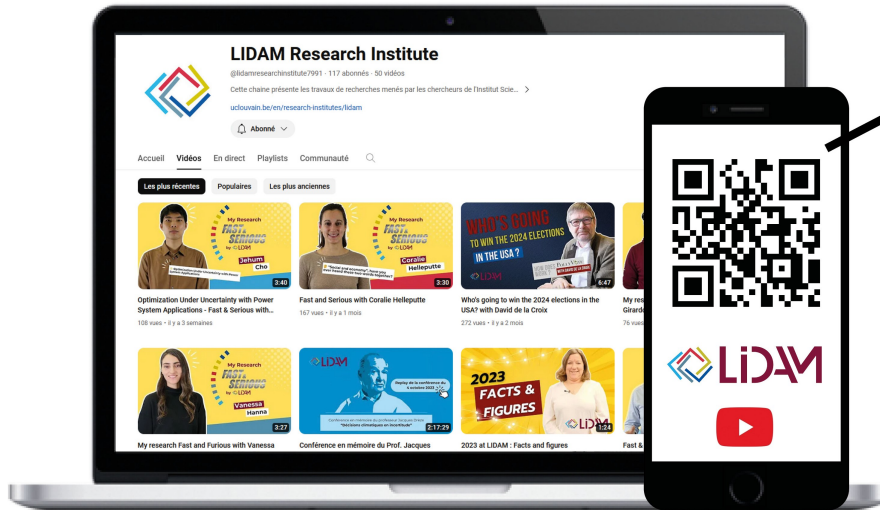
*The photo will then be shown on our screens and internally.*



[ Photo © Tatiana Regout - [Namibia](#) ]

**STAY INFORMED • SOCIAL FOLLOW**

Follow us on  YouTube



Scan me  
to keep up  
with our  
latest news



 [Top](#)



LIDAM

Voie du Roman Pays, 34 | 1348 - Louvain-la-Neuve  
[lidam.com@uclouvain.be](mailto:lidam.com@uclouvain.be)

*Copyright © 2024 CORE, All rights reserved.*

--> Want to unsubscribe ? Send an e-mail to [lidam.com@uclouvain.be](mailto:lidam.com@uclouvain.be)